

R&S®M3SR ZS4400

Service and

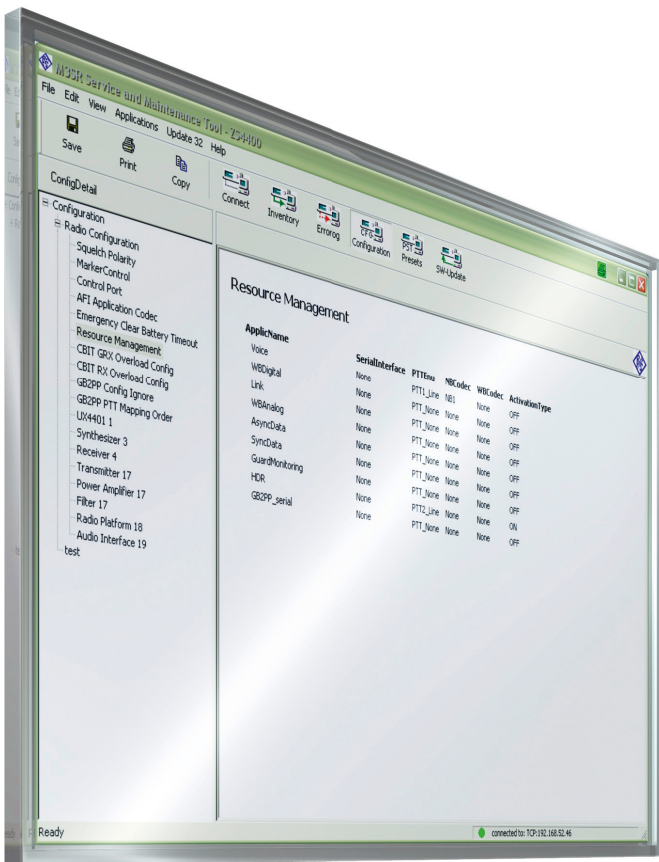
Maintenance Tool

For R&S®M3SR Series4400

software defined radios

SOVERON

True independence is a choice



R&S®M3SR ZS4400 Service and Maintenance Tool At a glance

The R&S®ZS4400 service and maintenance tool makes it possible to determine and log all essential features and configurations of an R&S®M3SR Series4400 software defined radio as well as of the R&S®GB4000C remote control unit.

The R&S®ZS4400 service and maintenance tool is used for the highly modular R&S®M3SR Series4400 software defined radio, which is deployed in air defense, navy and civil air traffic control missions.

The convenient GUI of the R&S®ZS4400 gives the user the identification of the addressed radio immediately after link setup. A standard Ethernet port connects the R&S®ZS4400 to the R&S®M3SR Series4400 or to a local area network (LAN).

The tool allows uploaded radio configurations to be downloaded to other radios. This procedure is called cloning and makes it possible to log and distribute the radio configuration, for example at selected sites or after servicing has been performed.

In addition, the R&S®ZS4400 allows software updates to be downloaded to R&S®M3SR Series4400 radios. The radio configuration parameters (such as the set transmit power) are password-protected. To modify radio parameters, the correct password must be entered first. This prevents inadvertent or unauthorized access, resulting in enhanced security.

Moreover, the R&S®ZS4400 can be used to read out and log the activated device options.



Key facts

- Customized directories: for user-defined directory structure and management
- Radio configuration and cloning: for saving user-selected device configurations and loading this information onto other radio units to ensure identical configurations
- Error log, device inventory, radio options: device information that can be saved and printed for status freezes and system configuration
- Preset pages: download/upload of preset pages for distribution purposes
- Radio software update: automatic comparison of a software release already loaded and a CD-based one; for performing software updates

System requirements

- Min. 400 Mbyte free space on hard disk drive, CD-ROM drive, Ethernet port
- Microsoft Windows 7 (32 bit/64 bit)
- Microsoft Windows 10 (64 bit)

Ordering information

Designation	Type	Order No.
Service and maintenance tool	R&S®ZS4400	6105.2600.03

Detailed radio inventory

Type	Name	Identno./Var	Serial no.	Version	Production date
DEV	XT4410L	6102.0007.01	100034.000	25.00	2009/01/21
SWMOD	DS4400_PACK	6102.2168.00	000000.000	01.00	2009/12/01
SW	BOOTPROG	6102.5621.02	000000.000	02.04	2007/09/21
SW	PLATFORM	6103.1607.02	000000.000	01.01	2009/12/01
HWMOD	KR4400_BASIS	6102.5009.04	101389.000	23.00	2009/01/21
FW	DSP_KR4400	6102.5644.02	000000.000	03.62	2007/12/13
FW	DSP_MODULE	6105.8950.02	000000.000	01.02	2008/06/09
FW	ACPCB_vs_EQQ	6105.6412.06	000000.000	01.27	2002/02/04
HW	FRONT_PANEL_B	6102.6498.03	102439.000	04.09	2008/10/14
FW	ALF_GF4400T	6102.7501.02	102976.000	07.02	2008/11/20
FW	FLASH_ET4400	6102.6176.02	000000.000	01.00	2008/11/18
HW	RECEIVER_B	6102.7093.02	102967.000	00.14	2008/11/20
HWMOD	ET4400G_G_REC	6102.8508.02	102919.000	02.03	2009/01/21
FW	FLASH_ET4400G	6102.8614.02	000000.000	01.23	2009/05/02
FW	GUARD_REC_B	6102.8950.02	102946.000	01.13	2008/01/21
HWMOD	GF4400T_SYNTH	6102.6505.03	102326.000	16.00	2008/11/18
HW	VCO_BOARD	6102.6634.02	102997.000	01.06	2008/11/18
FW	ALF_GF4400T	6102.6625.03	000000.000	04.82	2009/04/29
HW	SWITCHES25P_B	6102.6177.02	102508.000	01.19	2008/11/18
HW	XL_GF4400T	6102.6611.03	000000.000	04.82	2009/04/29
HWMOD	VT4400_TRANSM	6102.7501.06	100112.000	30.00	2008/10/20
FW	DSP_VT4400	6102.7599.02	000000.000	03.04	2009/06/04
FW	DSP_CPLD	6105.8950.02	000000.000	01.02	2008/10/20
HW	TRANSMITTER_B	6105.1504.03	100216.000	04.14	2008/10/20

Radio event indication overview

Errorcode	ErrorDescription	ErrorLevel	RepeatCount	Module Code
359	TRANSMITTER VSWR above limit	Warning	1	1
362	TRANSMITTER output power reduced	Warning	1	1

Service that adds value

- | Worldwide
- | Local and personalized
- | Customized and flexible
- | Uncompromising quality
- | Long-term dependability

Rohde & Schwarz

The Rohde & Schwarz electronics group offers innovative solutions in the following business fields: test and measurement, broadcast and media, secure communications, cybersecurity, monitoring and network testing. Founded more than 80 years ago, the independent company which is headquartered in Munich, Germany, has an extensive sales and service network with locations in more than 70 countries.

www.rohde-schwarz.com

Sustainable product design

- | Environmental compatibility and eco-footprint
- | Energy efficiency and low emissions
- | Longevity and optimized total cost of ownership

Certified Quality Management

ISO 9001

Certified Environmental Management

ISO 14001

Certified Quality Management

AQAP-2110

Regional contact

- | Europe, Africa, Middle East | +49 89 4129 12345
customersupport@rohde-schwarz.com
- | North America | 1 888 TEST RSA (1 888 837 87 72)
customer.support@rsa.rohde-schwarz.com
- | Latin America | +1 410 910 79 88
customersupport.la@rohde-schwarz.com
- | Asia Pacific | +65 65 13 04 88
customersupport.asia@rohde-schwarz.com

R&S® is a registered trademark of Rohde & Schwarz GmbH & Co. KG

Trade names are trademarks of the owners

PD 5213.7425.12 | Version 06.00 | April 2019 (ch)

R&S®M3SRZS4400 Service and Maintenance Tool

Data without tolerance limits is not binding | Subject to change

© 2009 - 2019 Rohde & Schwarz GmbH & Co. KG | 81671 Munich, Germany



5213742512